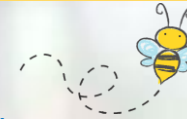


Oxford Plan Bee-autiful!

Bees need your help!



Bees need places to live, flowers for food, and to be safe from poisons – you can help!

Here's our plan: We're going to build a Bee-autiful Community Meadow full of bees and flowers **made by you** and use that, along with letters and photos, to send messages to the government, farmers, schools, and workplaces about how we can all help the bees!

We need your help! Would you make a bee or flower crafty creation for the Community Meadow?

Would you write a letter to help us spread the message about helping the bees?

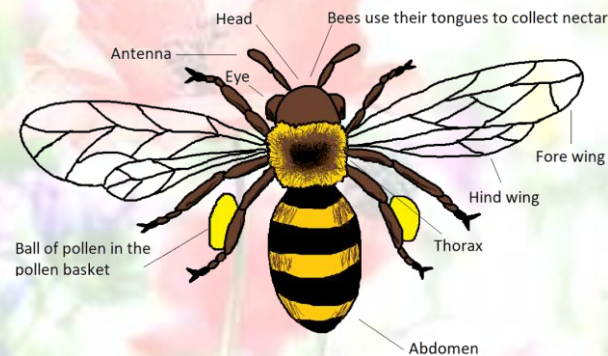
Your bee or flower can be 3D or flat, and you can make as many as you want. Make them out of anything - There are plenty of perfect crafty materials in and around your home (paper, wool, wire, string, fabric, ribbons, leaves - use your imagination!)



Send us your creations and we'll make the Meadow!

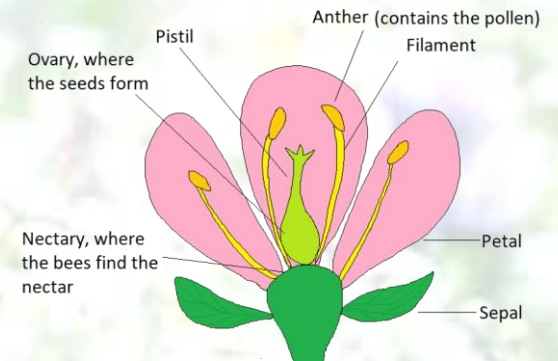
Pictures of the Meadow will go on our website and Twitter (@OxfordPlanBee), making a fabulous contribution to our efforts to help people learn how to help the bees!

What does a bee really look like?



Bees pick up pollen from flower anthers when they visit a flower for nectar. Then they deposit pollen on the next flowers they visit. This is called pollination!

What does a flower really look like?



When bees deliver pollen to a flower's pistil, this helps flowers make seeds. This is pollination from the plant's point of view!

**Please send your crafty creations to
Oxford Plan Bee c/o Tonya Lander
Department of Plant Sciences,
University of Oxford, South Parks
Road, Oxford, OX1 3RB, UK**

To learn more about bees, flowers, pollination, conservation and science, and see short videos about the parts of a bee and flower, and bee and flower diversity around the world, visit:
<https://oxfordplanbee.web.ox.ac.uk/home>

What else could you do to help bees?

You could take a picture of your crafty bee or flower creation, or even make another one, and send it along with a letter to let people know we all need to care for the bees.

Your school or workplace – ask if they can plant bee-friendly plants outside their buildings

Your local council – ask them to consider pollinator friendly management practices and pollinator planting schemes

If you would like to contact your local **Member of Parliament, George Eustice the Secretary of State for Environment, Food and Rural Affairs, or the Prime Minister**, you may be interested in The Wildlife Trusts Action for Insects Campaign: <https://action.wildlifetrusts.org/page/74049/data/1>¹

For more ideas on what to write and who to write to, visit:

<https://oxfordplanbee.web.ox.ac.uk/oxford-plan-bee-autiful-1>



Make a bee nest box

and put it up in your garden to provide a safe home for bee eggs and larvae. If you're lucky, solitary bees will creep inside and lay their eggs in the tubes. They will seal the end with a leaf or mud, then the new bees will hatch and make their way out in the spring.

Six simple actions for insects²: Create insect-friendly habitats: 1 Convert a lawn into a wild flower meadow. 2 Grow native plants. 3 Reduce pesticide and herbicide use. 4 Limit use of exterior lighting – it confuses moths and fireflies. **Increase awareness and appreciation of insects:** 5 Talk about how great insects are. 6 Campaign for insect conservation.



This flower is good for bees. Inside you can see the anthers that hold the pollen.



This flower is not as good because the petals are packed close together and it's hard for the bee to find the pollen and nectar.

Encourage your school or workplace to make a pollinator garden



Some plants bees like are:
Lavender,
Foxgloves,
Spring bulbs,
Asters,
Sedums,
And many more!

Find out more at
<https://oxfordplanbee.web.ox.ac.uk/home>

Wytham
WOODS
the natural place for science



¹ We take no responsibility for content on external pages. ² <https://www.pnas.org/content/118/2/e2002547117>